

Math - Area

Name: _____

We use area to measure how much space is inside a shape.

We see 'area' used a lot, when we look at home layouts. When we are given the area, then we know how big each room is.

Area can be measured in inches, cm, mm, feet, meters, yards, km, etc. If a box is 2 inches long, by 2 inches wide, the area is 4 ($2 \times 2 = 4$). But to show that it is AREA, and not just perimeter, we put a little number 2 beside the measurement, and that shows that the measurement refers to area (the 2 means 'squared'). So the answer to the question above would be 4 inches²

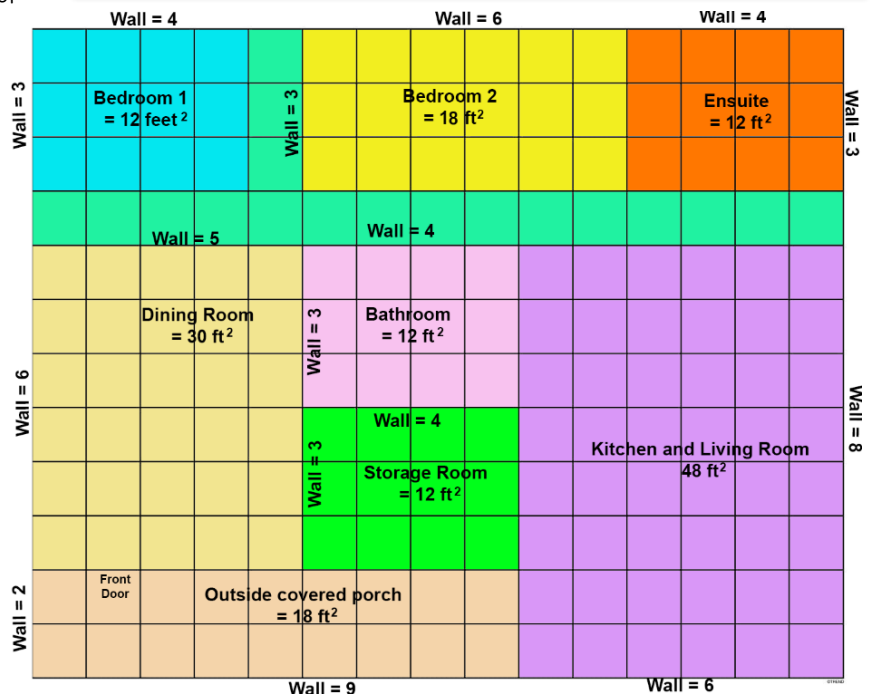
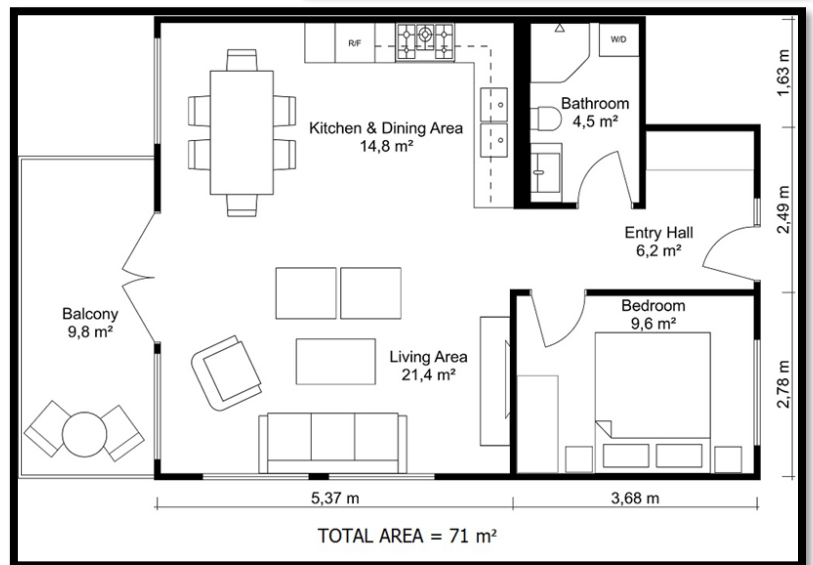
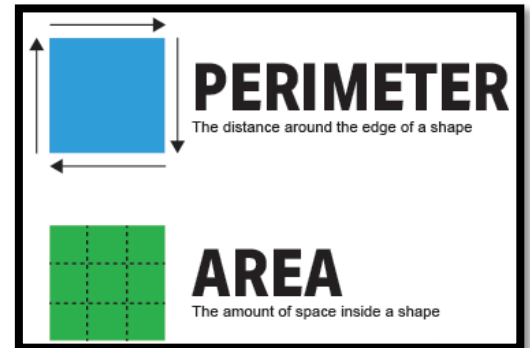
You will be asked to design several different things.

- Use a ruler to measure the length of the walls.
- Then, round your calculation up or down, to avoid a decimal point.
- Then, multiply the length of the wall, by the width of the wall, to get the area¹
- Write the measurements of the walls, next to the walls
- Write the total area PER ROOM at the center of the room

Look at the example on the bottom right of this page. Each room has two TOUCHING walls labeled and measured, and then the area is written in the middle of the room.

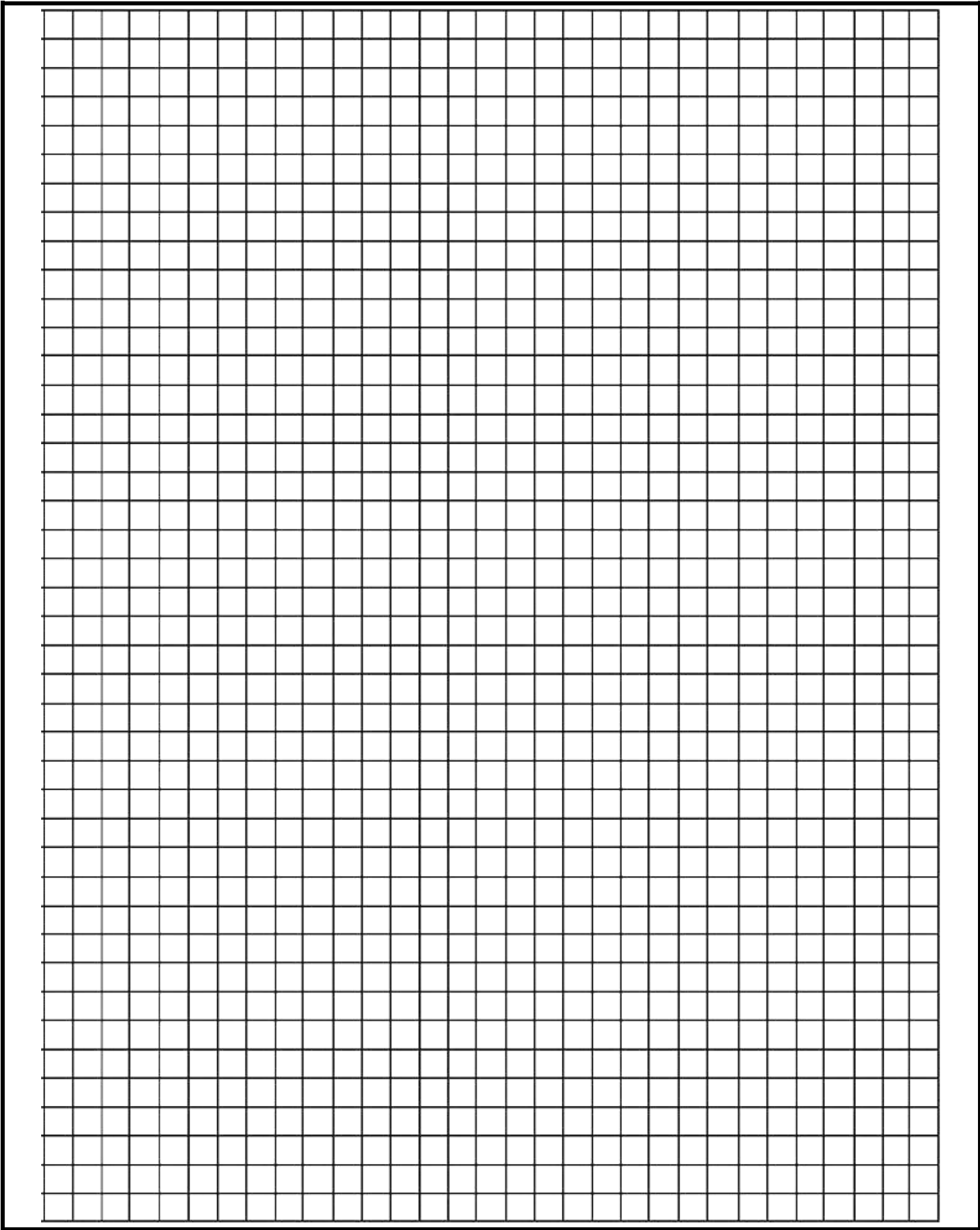
If you are feeling really confident with this skill, then provide several different rooms. If you are feeling like this is a challenge, then only provide a few rooms.

For your designs, we will assume that each square measures 1 foot in real life.

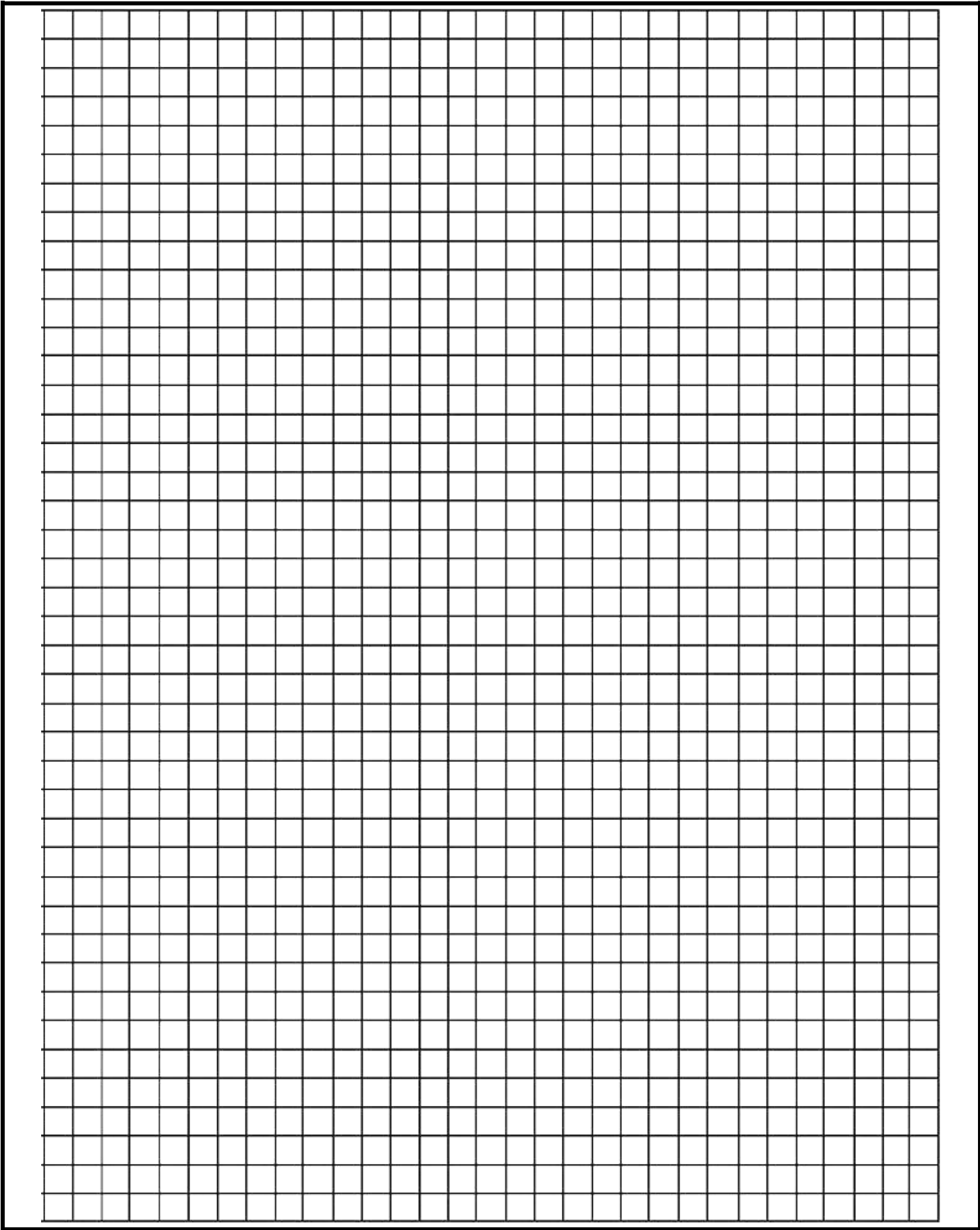


¹ It doesn't matter which wall you call 'length', and which wall you call 'width' – the important thing is that you have one measurement for one side, and another measurement for a different (but touching) side

Design #1 – the perfect house:



Design #2 – the perfect school:



Design #3 – the perfect shopping mall:

